



---

C O R P O R A T E   P R O F I L E

---

**株式会社 オンテック**  
**ONTEC CO., LTD.**

# CORPORATE PHILOSOPHY

**Q (Quality), C (Cost) and D (Delivery)** are the highest priority for our ONTEC business.

**ONTEC is the company aiming at Research and Development based on customer's view point, and is working flexibly on product development.**

## **<Management Philosophy> – – > “Harmony”**

Our business management philosophy is “Harmony”, and we have the mind of forgiveness, and also are performing responsibility and duty for society.

All members of ONTEC are developing ONTEC's business for harmony with the society and environment.

## **<Business development> – – > “To be the unique technological development company”**

We, ONTEC, are doing our best effort to be the unique technological development company.

We are analyzing needs and seeds of market continuously and value the niche market. Based on these analyses, we are creating the new and unique business aggressively

**Now we have the following three business organizations.**

### **◆ Printed Circuit Board Business**

The print circuit board business is the integrated business of design – production – assembly, and EDMS business also is included.

### **◆ System Solution Business**

The system solution business is the development and production of FA Network, Homeland Security equipment, and also the embedded system.

### **◆ Video Communication Business**

The video communication business is the system development and integration of video equipment and also the import business of foreign products.

These ONTEC's business is performed by concentration of our all technical resources and we convince that these businesses are contributing to customer satisfaction and society. We are working for our customers based on the mind of “Sensitivity”, “Quickness” and “Action”. And we are producing the high quality and reliable products continuously.

Thank you for your continuous instruction and collaboration.

President & CEO Osamu Nakayama



Business organization

# 自創技術集団立社を目指す。

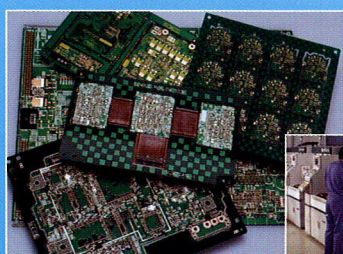
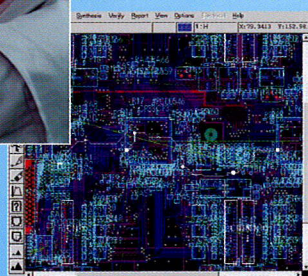
ニーズに応える最先端テクノロジー。

## プリント回路事業

トータルな一貫生産体制（設計～製造～実装）技術から生まれる  
高品質・短納期で顧客ニーズに対応



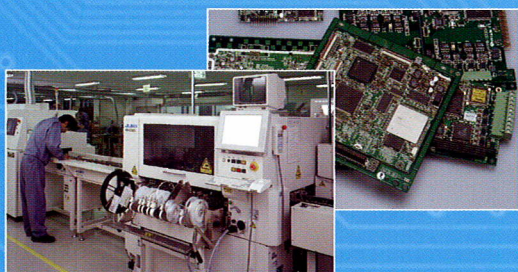
Design



Product



Assembly



EDMS (Electronics Design Manufacturing Service)



# より速く… より高品質に…

豊かな想像力と確かな技術力で最先端技術への挑戦!  
〈ISO9001認証・ISO14001認証〉

## ビデオコミュニケーション事業

デジタル映像機器… HDビデオディスクレコーダー(放送局・競技場・イベント向け)  
IP伝送システム… SD/HD画像圧縮・高音質伝送(Streambox社製)



AVENIR MINI



VDRH9000EX

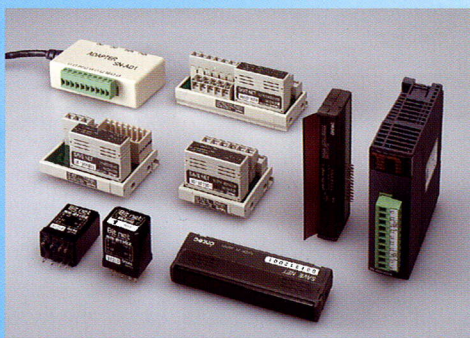


VDRH8000

# Broadcast

## システムソリューション事業

FAネットワーク機器(SAVE NET)…省配線制御伝送システム  
ホームランドセキュリティシステム…高性能回転台・カメラシステム



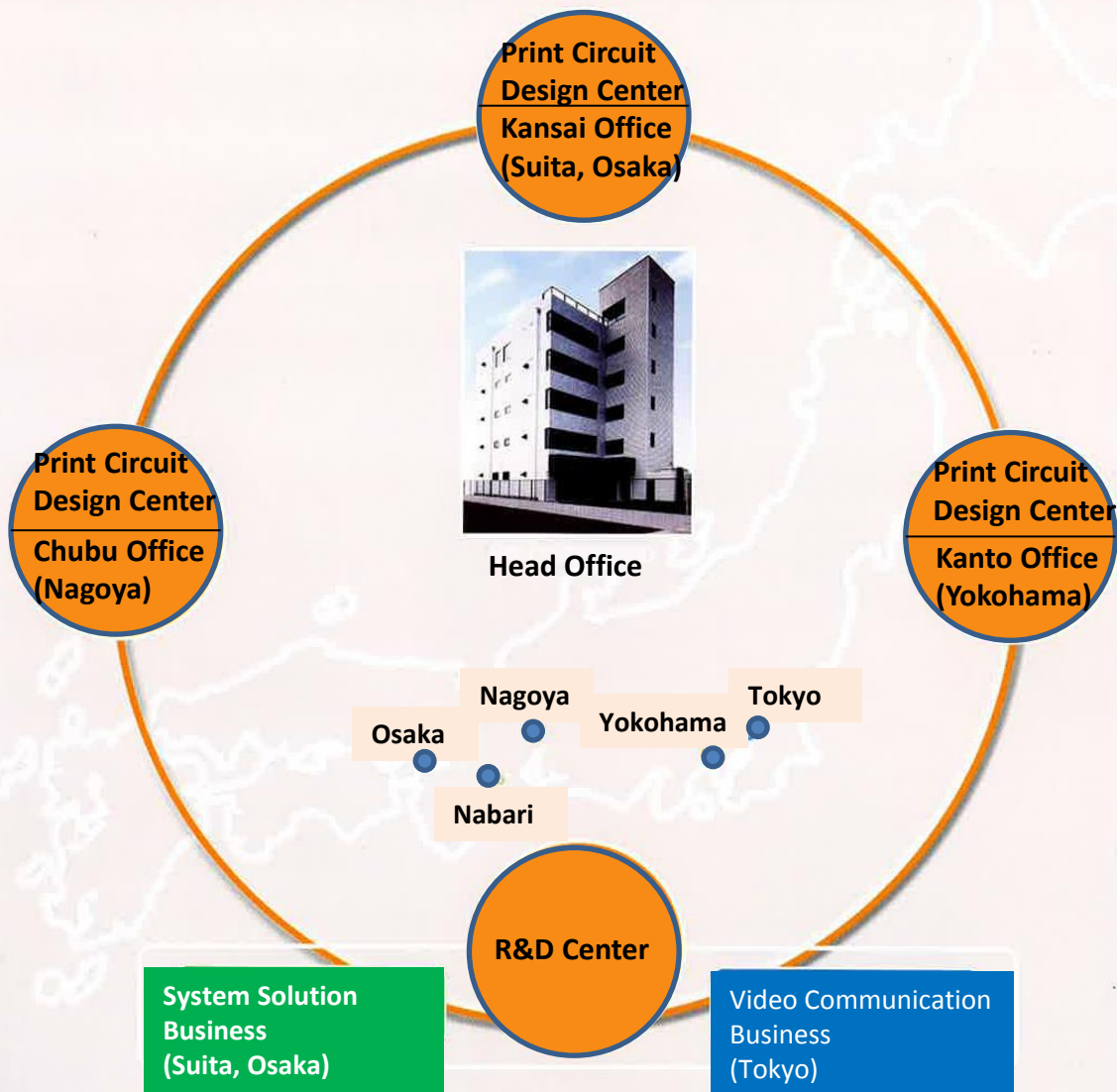
SAVE NET



Embedded



## Office & Factory



## Factory



**Takatsuki Factory**  
(Takatsuki, Osaka)



**Nabari No.1 Factory**  
(Nabari, Mie)



**Nabari No.2 Factory**  
(Nabari, Mie)

# Ontec Company Overview

## History

|            |   |
|------------|---|
| 1975 Oct   | Company formed by Mr. Osamu Nakayama for designing and production of electronic equipment |
| 1976 April | ON Electronics Established by Osamu Nakayama  |
| 1977 Oct   | Started PCB Design and Artwork  |
| 1981 Mar   | Move to new office at Yodogawa-ku, Osaka  |
| 1983 July  | Opened Nagoya sales Office  |
| 1983 Dec   | Introduction of CAD system for PCB designing  |
| 1985 Oct   | Built own headquarter building in Tarumi-Suita.   |
| 1988 June  | Opened Takatsuki Plant ( PCB insertion )  |
| 1988 Sept  | Opened Nabari Plant ( PCB Plant)  |
| 1990 Jan   | Nabari Plant recognized by UL File No.E122897   |
| 1992 April | Opened R&D Center   |
| 1995 June  | Expansion of CAD system fro PCB designing   |
| 1997 April | Capital Increase by the third party investment  |
| 1997 Oct   | Started sales of Save NET series  |
| 1999 July  | Started development of Automatic X-ray Inspection System                                  |
| 2000 Feb   | ISO 9001 approved   |
| 2000 April | Yokohama branch opened  |
| 2001 Mar   | R&D Center moved to Suita City  |
| 2001 July  | Sales started of Automatic X-ray Inspection System  |
| 2001 Nov   | Nabari Plant expanded   |
| 2002 April | PCB Insertion Operation moved to Nabari from Takatsuki for complete production system     |
| 2002 April | Engineering Dept established in Nagoya  |
| 2002 May   | Allegro CAD Design System introduced in Yokohama  |
| 2003 June  | Introduced Lead Free line in Nabari.  |
| 2003 Nov   | ISO 14001 approved  |
| 2004 Oct   | Tokyo branch office opened  |
| 2004 Oct   | Video Communication Business started  |
| 2005 Feb   | Capital increase by the third party investment  |
| 2005 April | Takatsuki plant established for FA system, Inspection Equipment.                          |
| 2005 Oct   | Nagoya branch moved to new location.  |
| 2006 Feb   | Tokyo office moved to new location.   |
| 2007 Oct   | Company name changed to Ontec. Co.,Ltd.   |
| 2009 July  | Tokyo office moved to new location. (Gotanda)   |
| 2011 May   | Tokyo office moved to new location.(Akihabara)  |

## Company Outline

|              |                        |
|--------------|------------------------|
| Company Name | : Ontec Co., Ltd.      |
| Established  | : April 12, 1976       |
| Capital      | : JP¥ 372,500,000      |
| Employee     | : 169 (As of Oct 2017) |
| Directors    |                        |
| President    | : Osamu Nakayama       |
| Senior MD    | : Masatoshi Akamatsu   |
| Director     | : Toshiaki Hatakeyama  |
| Director     | : Yoshio Tomita        |
| Auditor      | : Kazumi Takehisa      |
| Auditor      | : Masaki Norieda       |

## Area of Business

1. Printed Circuit Board Business
  - \* PCB Designing
  - \* PCB Production Business
  - \* PCB Insertion Business
2. Electronics Systems Business
  - \* FA Systems Equipment Business
  - \* Home land security System
  - \* OEM control system
3. Video Communication Business
  - \* Data Transmission business
  - \* A/V Equipment Business
  - \* Consultant Business

## Main Customers

Panasonic, Omron, Toshiba, Elmo, Mitsubishi, SONY, Takebishi, Hamaphoto, Brother, Kaga Denshi, AISHIN, Kyocera, NHK, LIXIL, Sumitomo-denso, TOA, Toyokanetsu

## Banks

- Mizuho Bank
- Risona Bank
- MT UFJ

